

Bermuda to Newport, RI Weather Briefing

Michelle Pitcher
Director
Bermuda Weather Service
29 June 2024



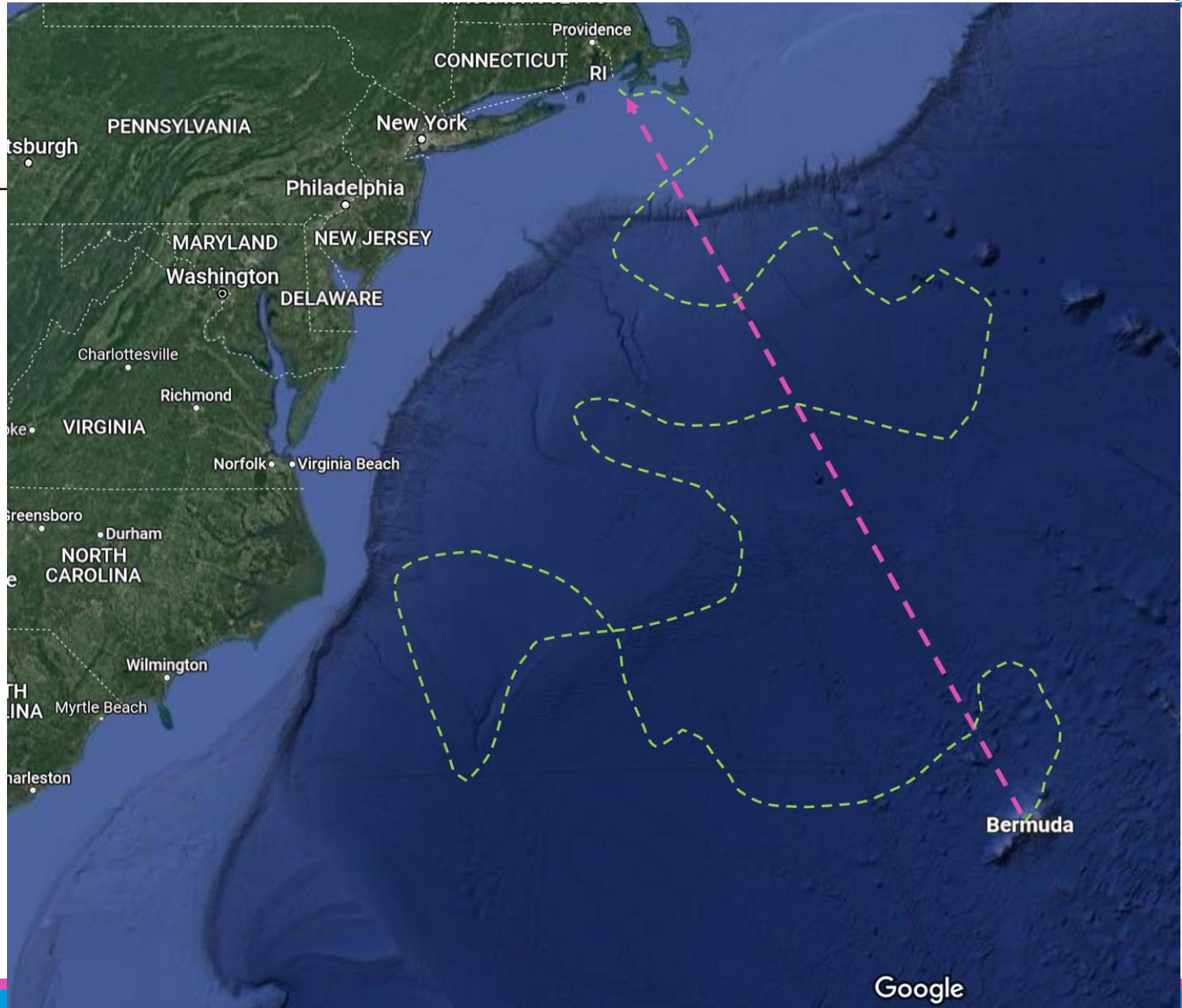
Rhumb Line



636 miles between
Bermuda and Newport



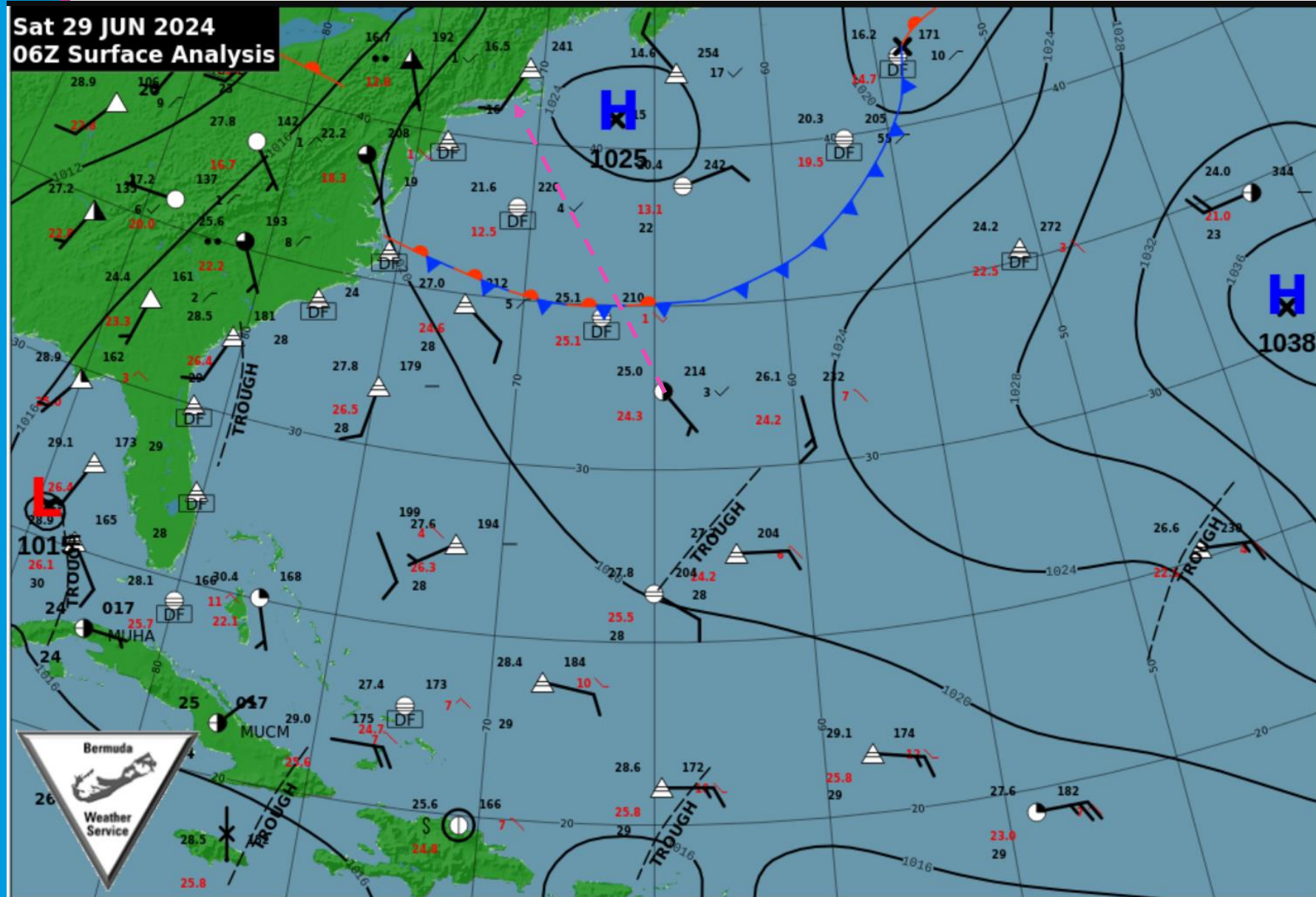
As opposed to
Rum Line



Google

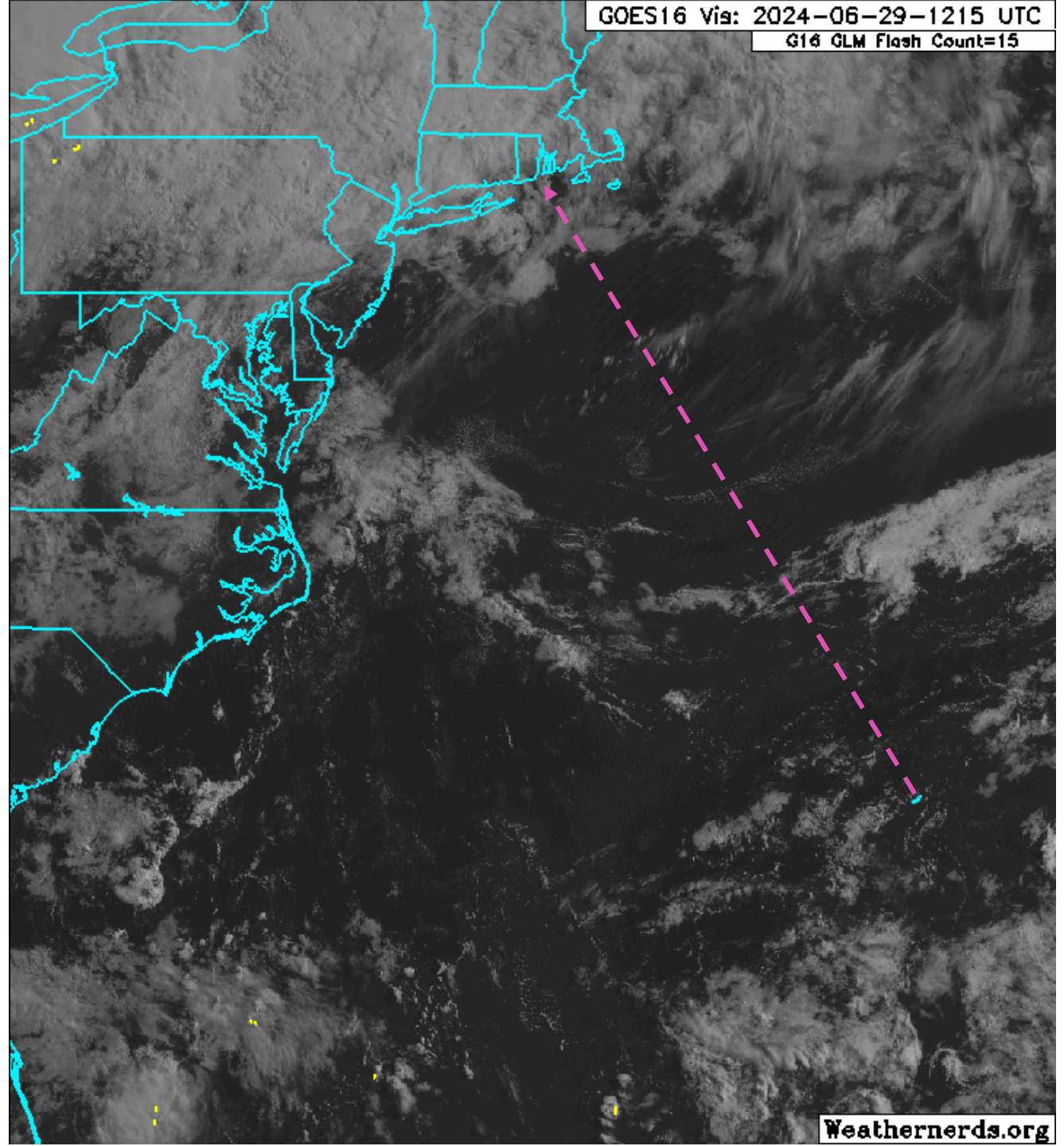
Current Conditions

06Z Surface Analysis
<https://weather.bm/charts.asp>

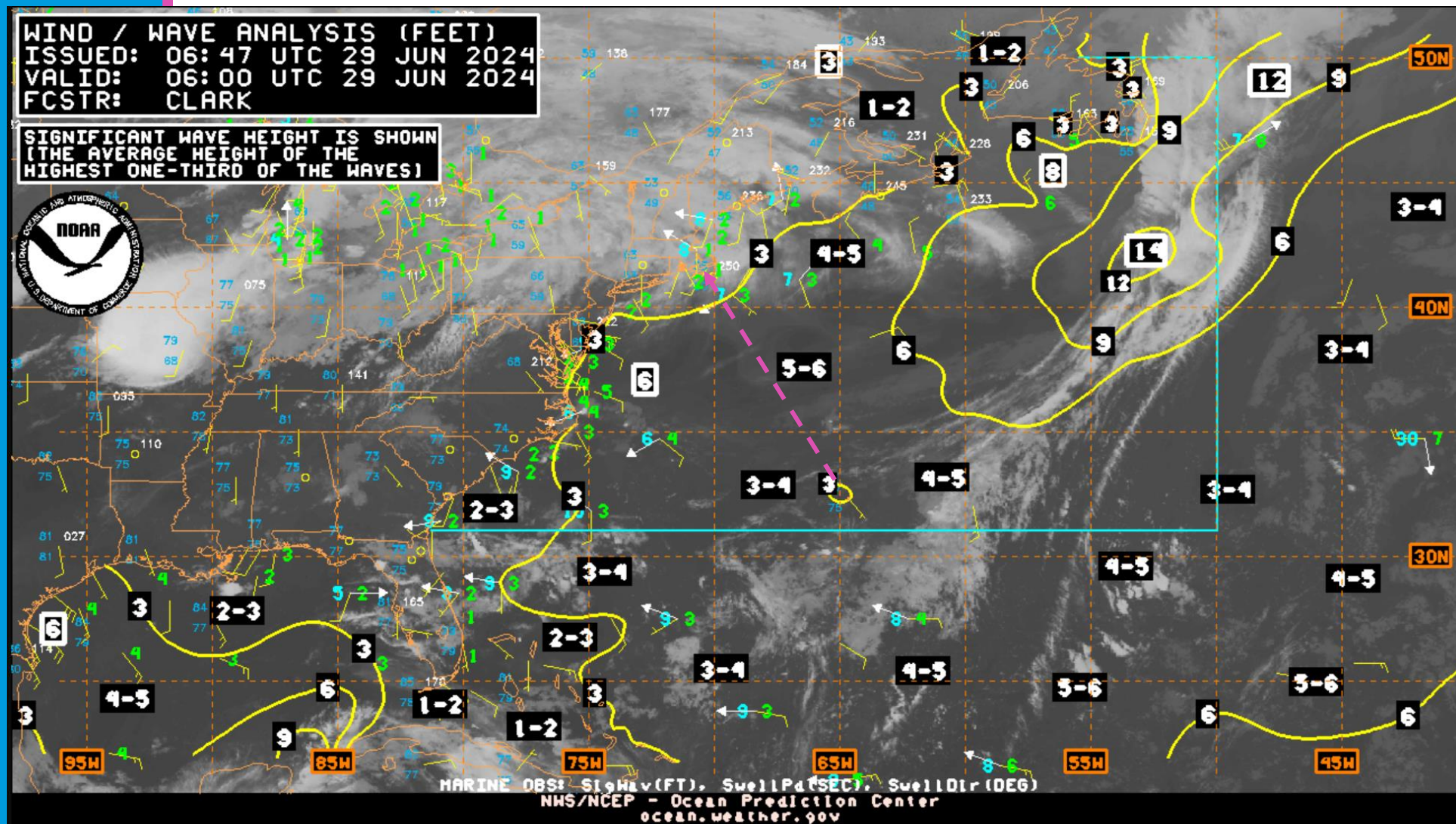


Current Conditions

Visible Satellite imagery
www.weathernerds.org



Current Conditions



NOAA OPC Wind/Wave Analysis
https://ocean.weather.gov/Atl_tab.php

For the North Atlantic...Caribbean Sea and the Gulf of Mexico:

Active Systems:

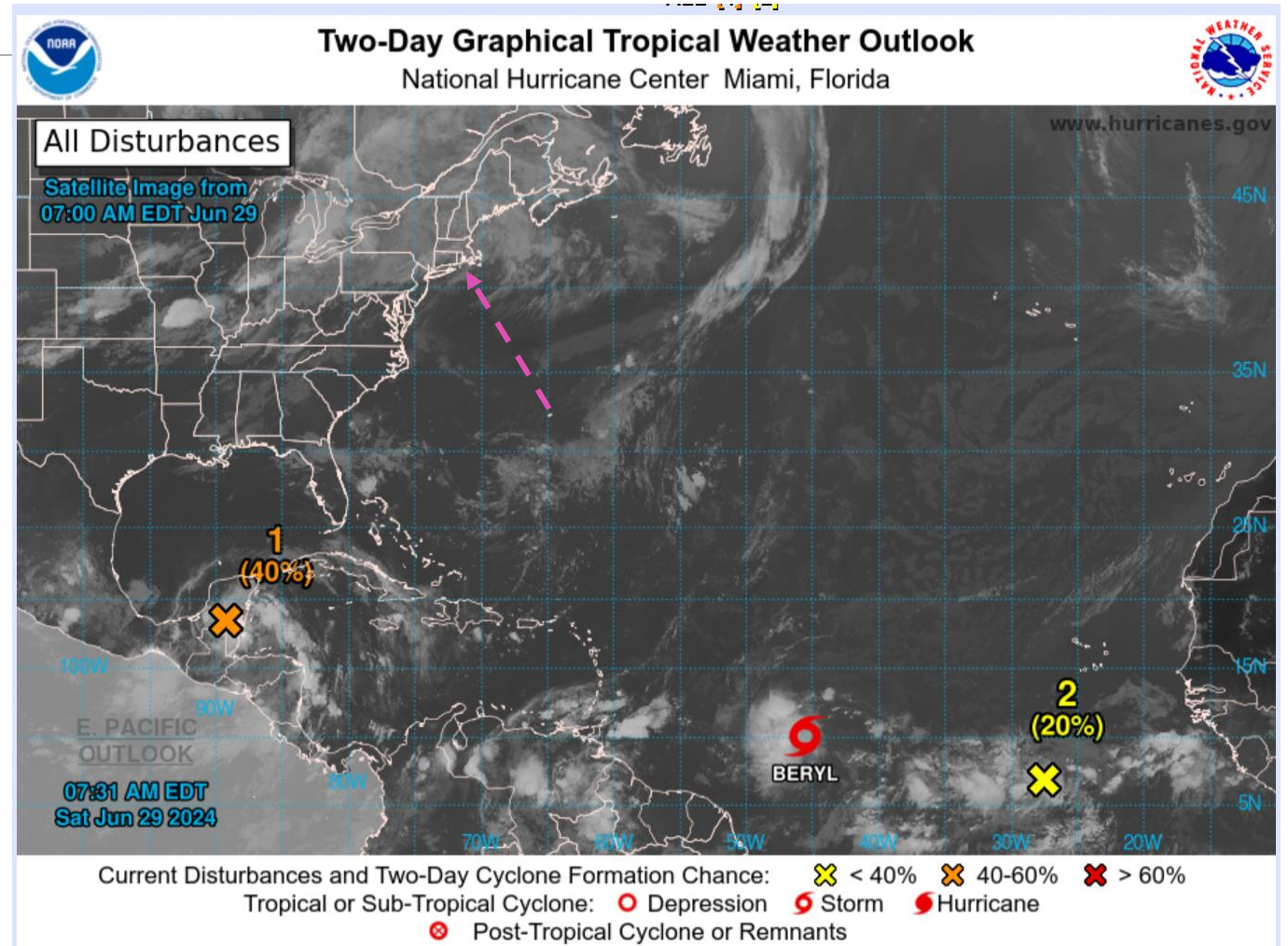
The National Hurricane Center is issuing advisories on Tropical Storm Beryl, located over the central tropical Atlantic Ocean.

1. Northwestern Caribbean/Southwestern Gulf of Mexico (AL94):
A broad area of low pressure is forecast to form over the Bay of Campeche tonight or early Sunday, where conditions appear generally conducive for further development. A tropical depression could form before the system moves inland again early next week over Mexico. Interests along the Gulf coast of Mexico should monitor the progress of this system. Regardless of development, heavy rainfall associated with the area of low pressure will affect portions of Central America and Mexico through early next week.
* Formation chance through 48 hours...medium...40 percent.
* Formation chance through 7 days...medium...40 percent.

2. Eastern Tropical Atlantic:
An area of low pressure located several hundred miles southwest of the Cabo Verde Islands is producing an area of disorganized showers and thunderstorms. Environmental conditions appear conducive for additional development of this system, and a tropical depression could form by the middle of next week while it moves generally westward at 15 to 20 mph across the eastern and central tropical Atlantic.
* Formation chance through 48 hours...low...20 percent.
* Formation chance through 7 days...medium...60 percent.

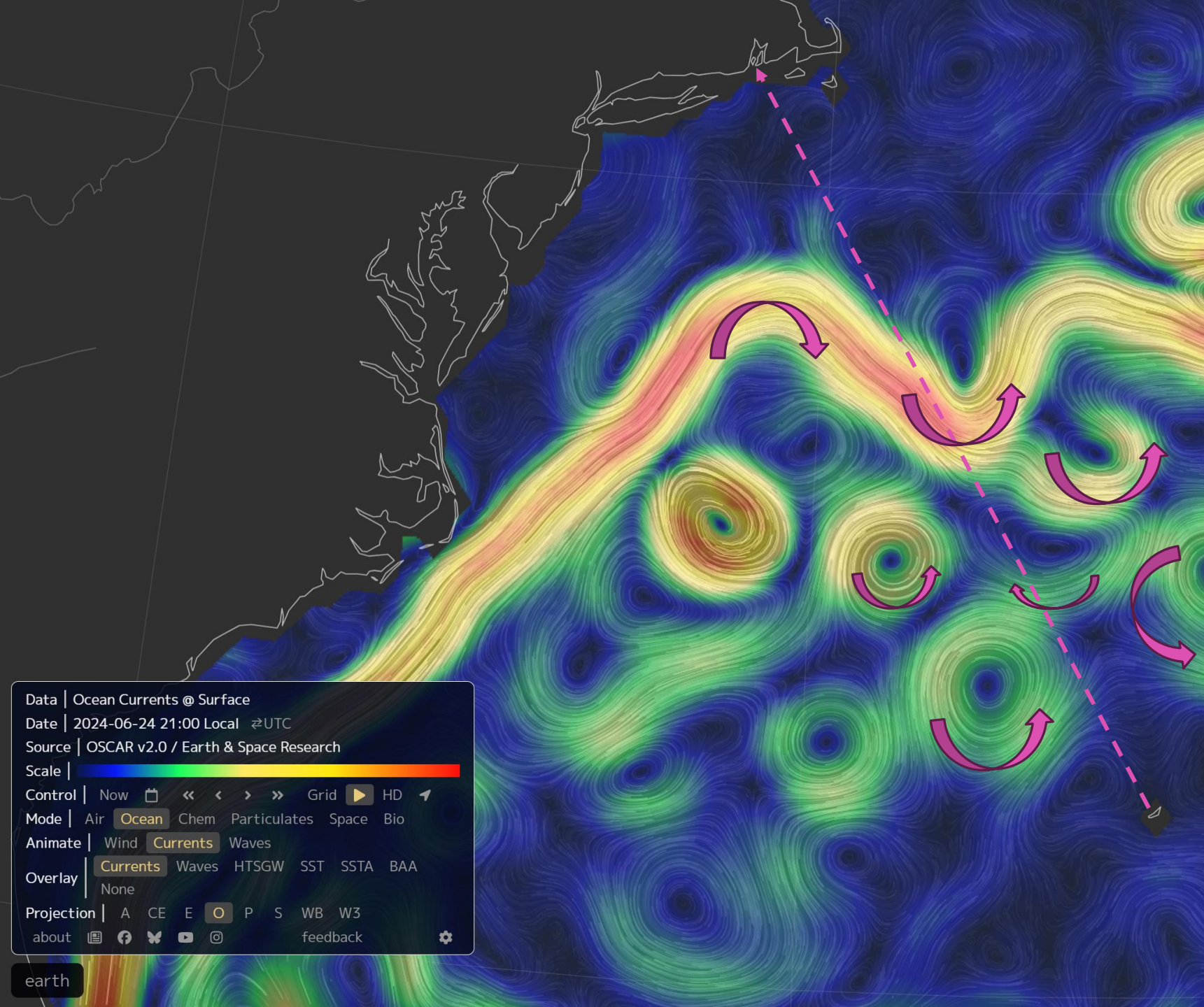
Public Advisories on Tropical Storm Beryl are issued under WMO header WTNT32 KNHC and under AWIPS header MIATCPAT2.
Forecast/Advisories on Tropical Storm Beryl are issued under WMO header WTNT22 KNHC and under AWIPS header MIATCMAT2.


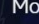
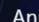




National Hurricane Center



Gulf Stream Analysis

[HTTPS://EARTH.NULLSCHOOL.NET](https://earth.nullschool.net)

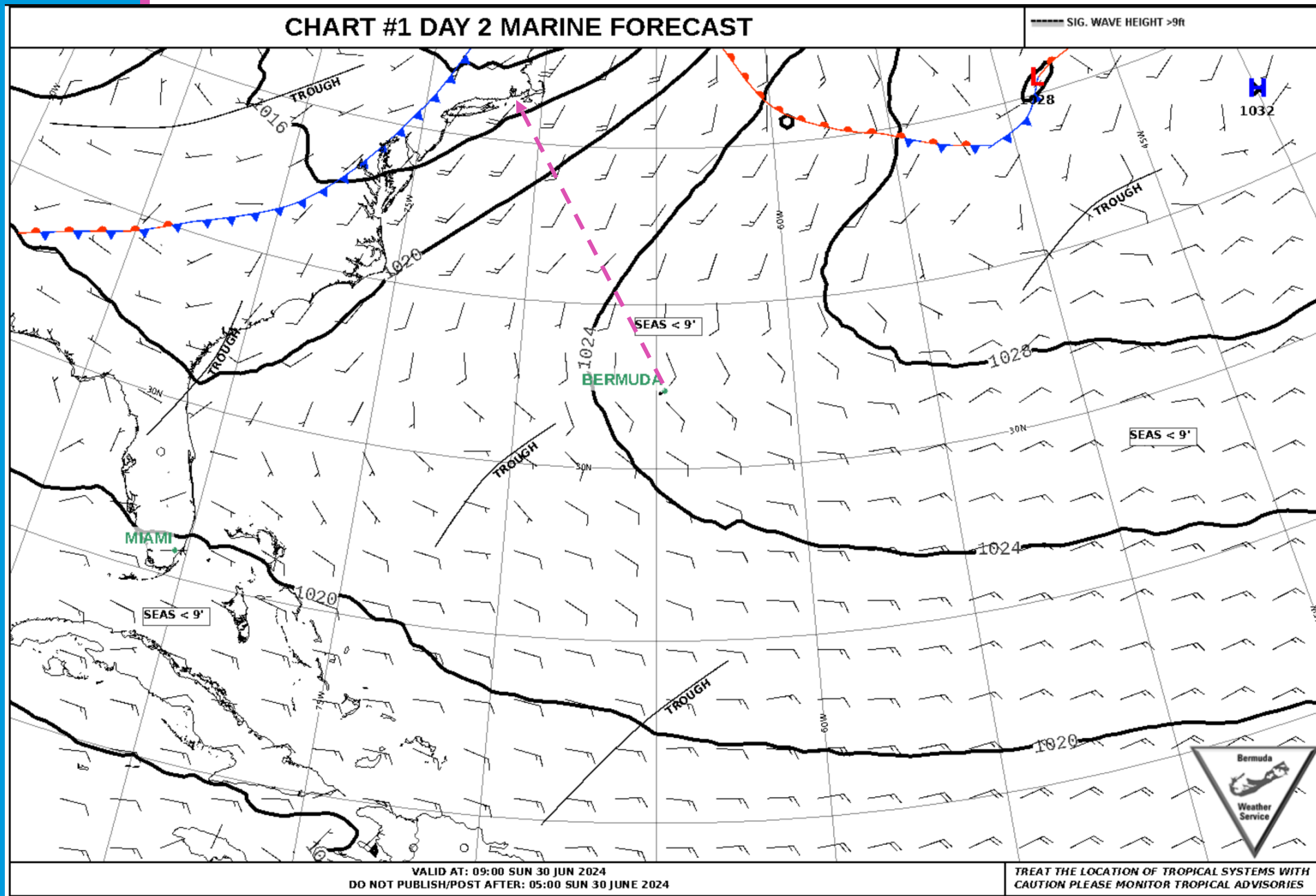


Data | Ocean Currents @ Surface
Date | 2024-06-24 21:00 Local \rightleftarrows UTC
Source | OSCAR v2.0 / Earth & Space Research
Scale | 
Control | Now      Grid  HD 
Mode | Air **Ocean** Chem Particulates Space Bio
Animate | Wind **Currents** Waves
Overlay | **Currents** Waves HTSGW SST SSTA BAA
None
Projection | A CE E **O** P S WB W3
about     feedback 

Forecast Conditions

Bermuda Weather Service
Marine Forecast chart 1
<https://weather.bm/charts.asp>

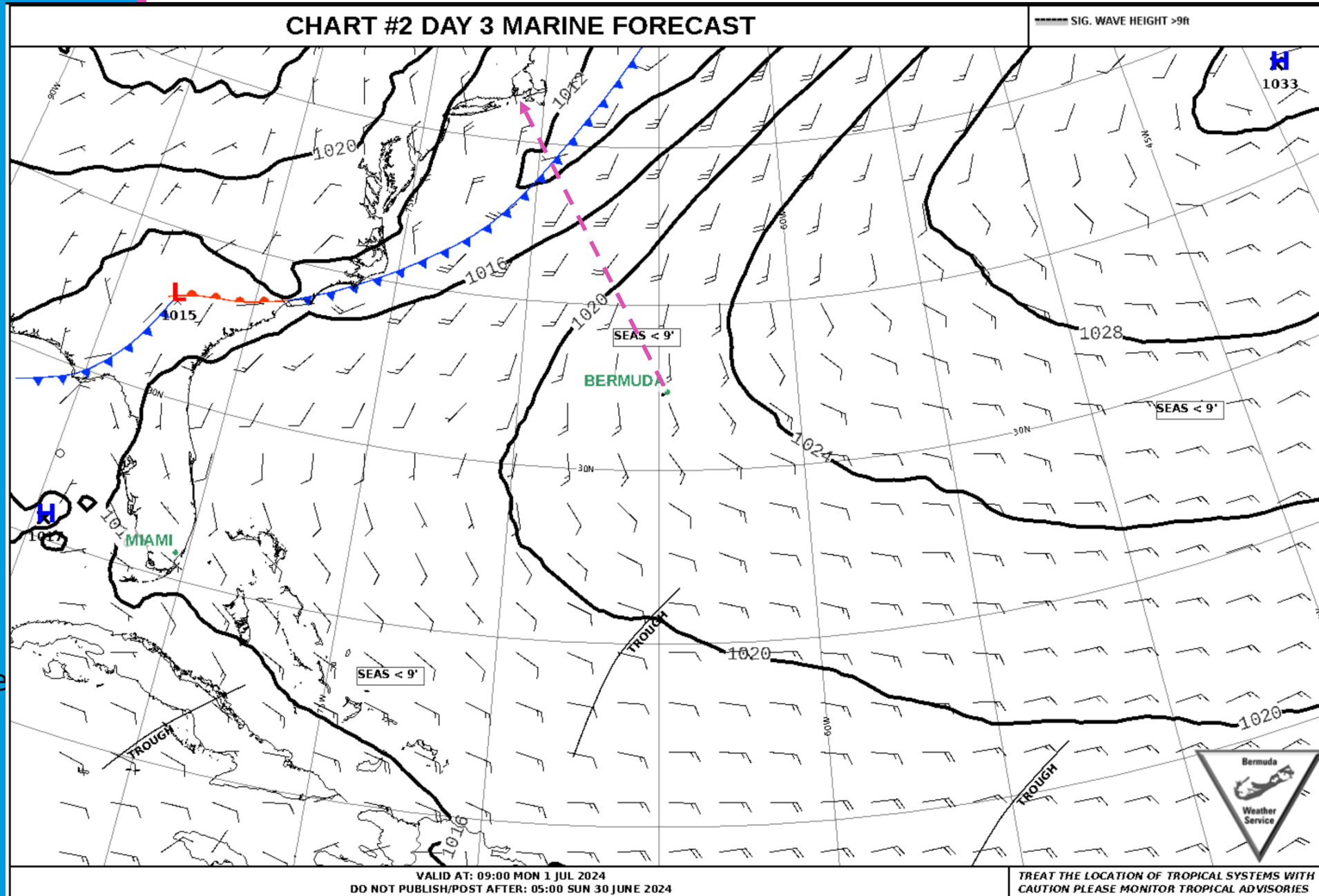
The 00Z model run
shows models in good
agreement on conditions



Forecast Conditions

Bermuda Weather Service
Marine Forecast chart 2
<https://weather.bm/charts.asp>

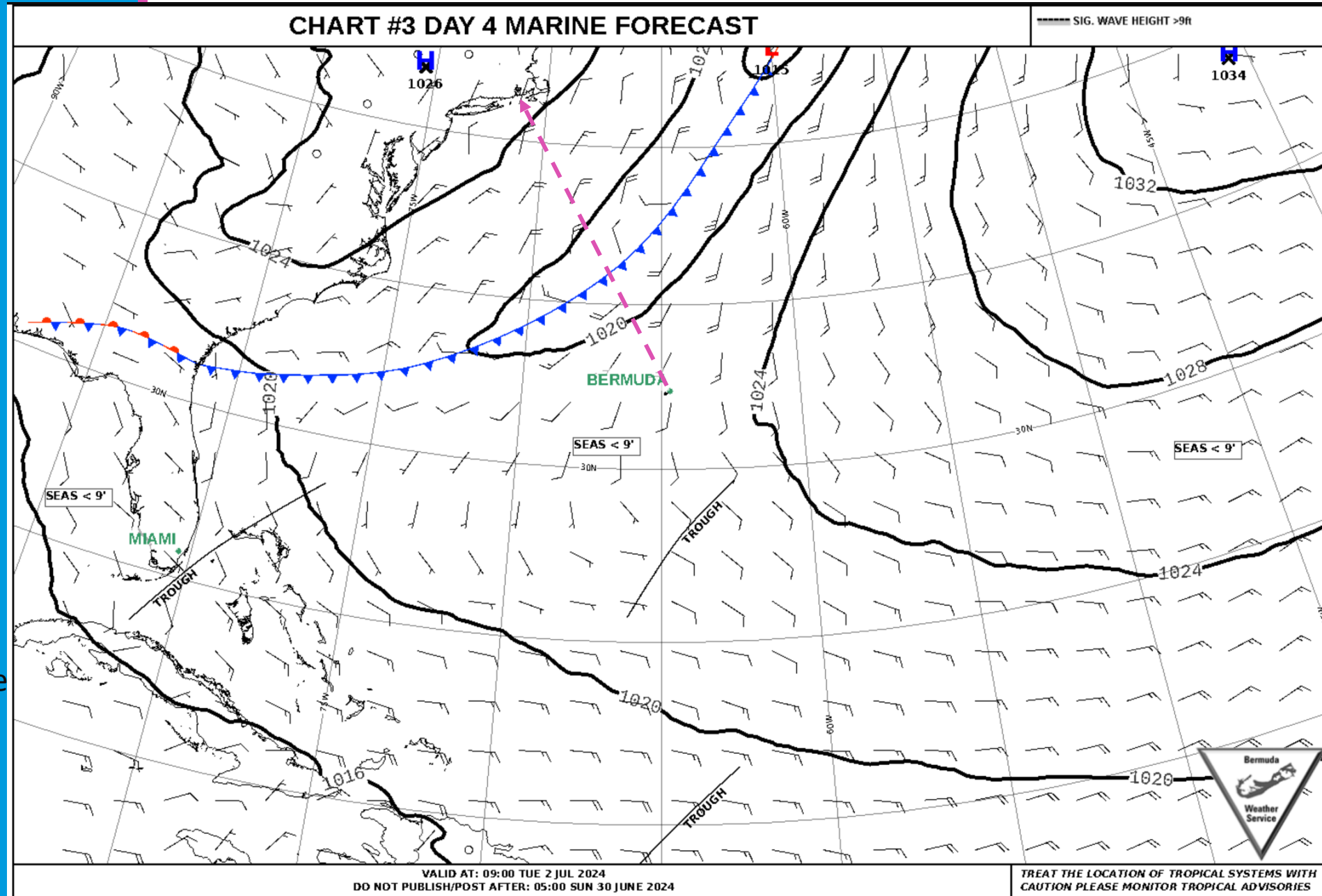
The 00Z model run shows moderate
good agreement on conditions



Forecast Conditions

Bermuda Weather Service
Marine Forecast chart 3
<https://weather.bm/charts.asp>

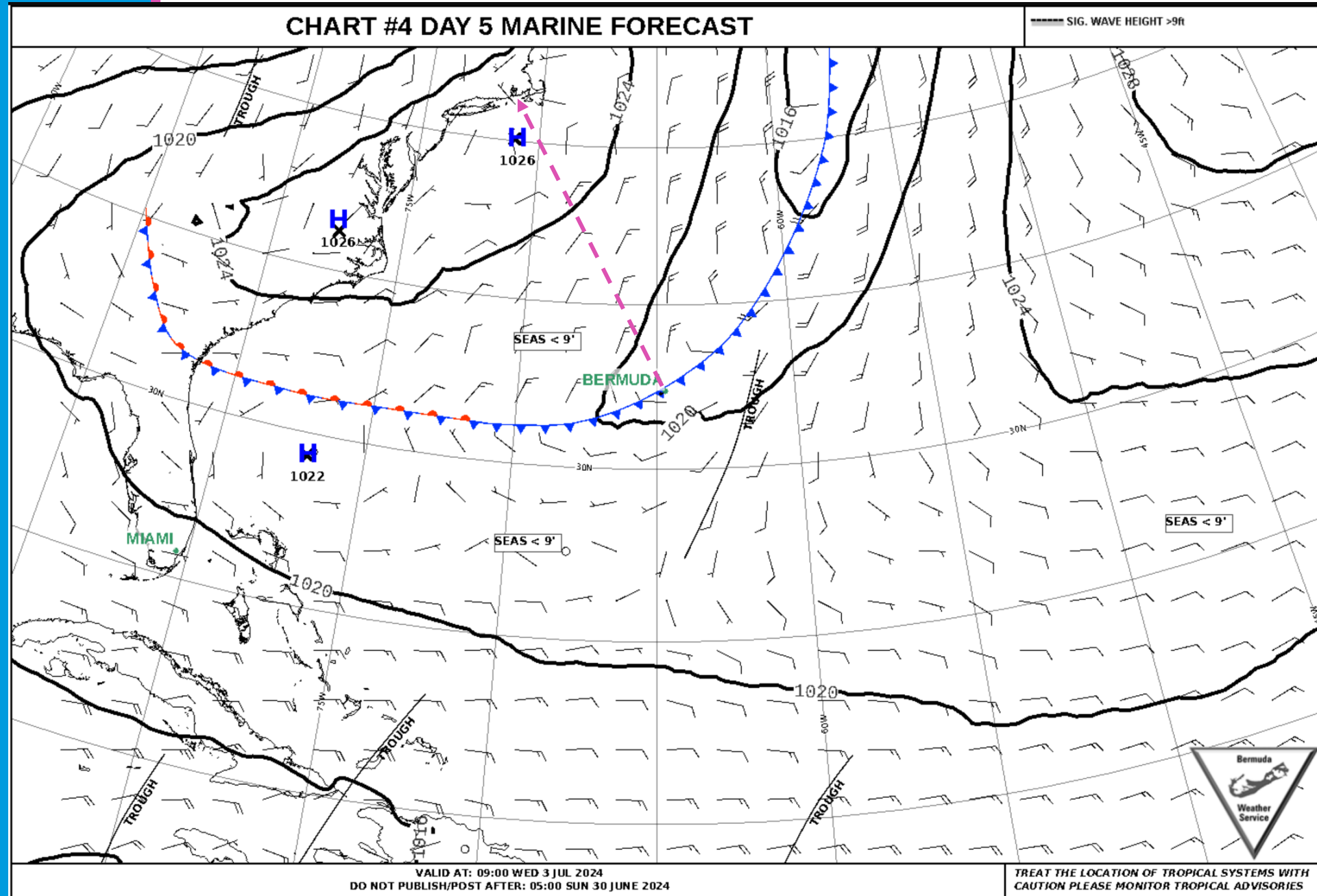
The 00Z model run shows moderate
good agreement on conditions



Forecast Conditions

Bermuda Weather Service
Marine Forecast chart 4
<https://weather.bm/charts.asp>

The 00Z model run
shows models in
moderate agreement
on conditions



Departure Conditions - Sunday

MARINE FORECAST

Sunday -

Winds south-southeasterly 8 to 12 knots... Isolated showers with mainly fair visibility... Seas inside the reef calm to 1 ft... Outside the reef 2 to 4 ft... Sunrise: 6:15 am; Sunset: 8:30 pm

Key to Map:

Red Dot - Cooper's Island, Bermuda

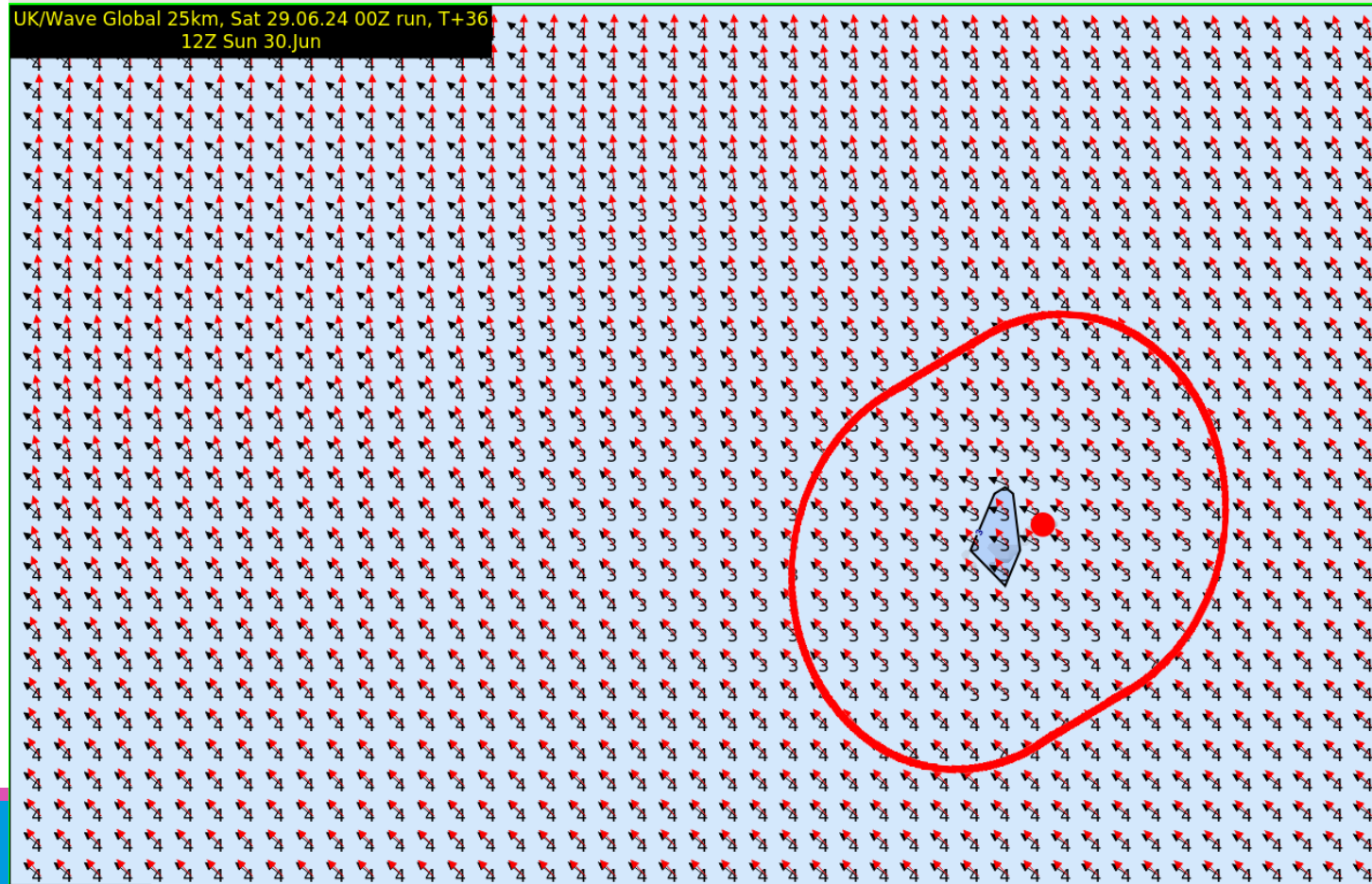
Red Line - 25nm Marine Area

Numbers - Significant Wave Heights

Red Arrows - Wave Direction

Black Arrows - Swell Direction

UK GLOBAL WAVE MODEL



Departure Conditions - Monday

MARINE FORECAST

Monday -

Winds south-southeasterly 8 to 12 knots, likely increasing 10 to 15 knots for a time... Chance of isolated showers with mainly fair visibility... Seas inside the reef calm to 1 ft... Outside the reef 2 to 4 ft... Sunrise: 6:16 am; Sunset: 8:30 pm.

Key to Map:

Red Dot - Cooper's Island, Bermuda

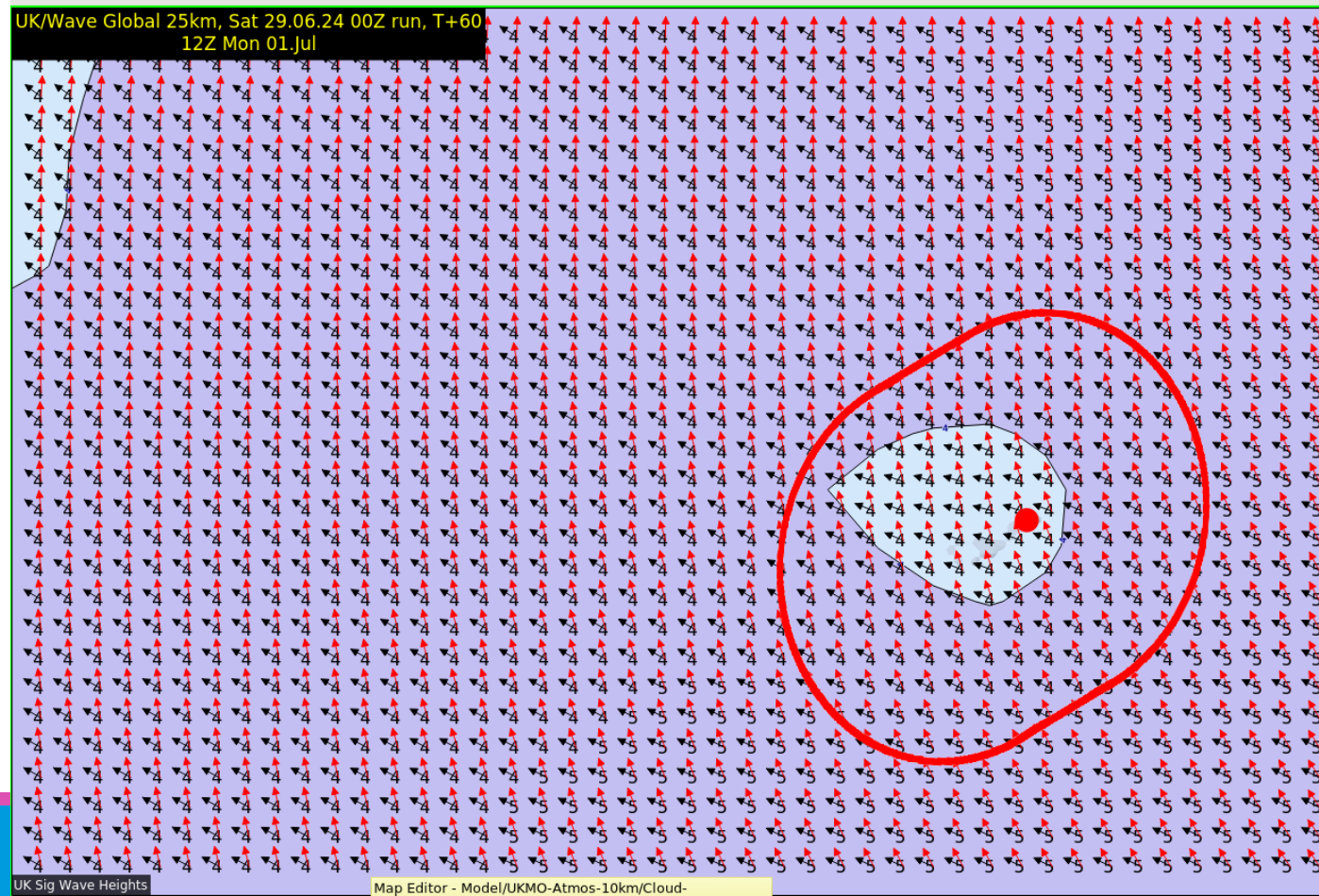
Red Line - 25nm Marine Area

Numbers - Significant Wave Heights

Red Arrows - Wave Direction

Black Arrows - Swell Direction

UK GLOBAL WAVE MODEL



Departure Conditions - Tuesday

MARINE FORECAST

Tuesday -

Winds south-southeasterly 10 to 15 knots, veering southerly overnight... Isolated showers develop overnight with fair visibility... Seas inside the reef calm to 1 ft... Outside the reef 2 to 4 ft... Sunrise: 6:16 am; Sunset: 8:30 pm.

Key to Map:

Red Dot - Cooper's Island, Bermuda

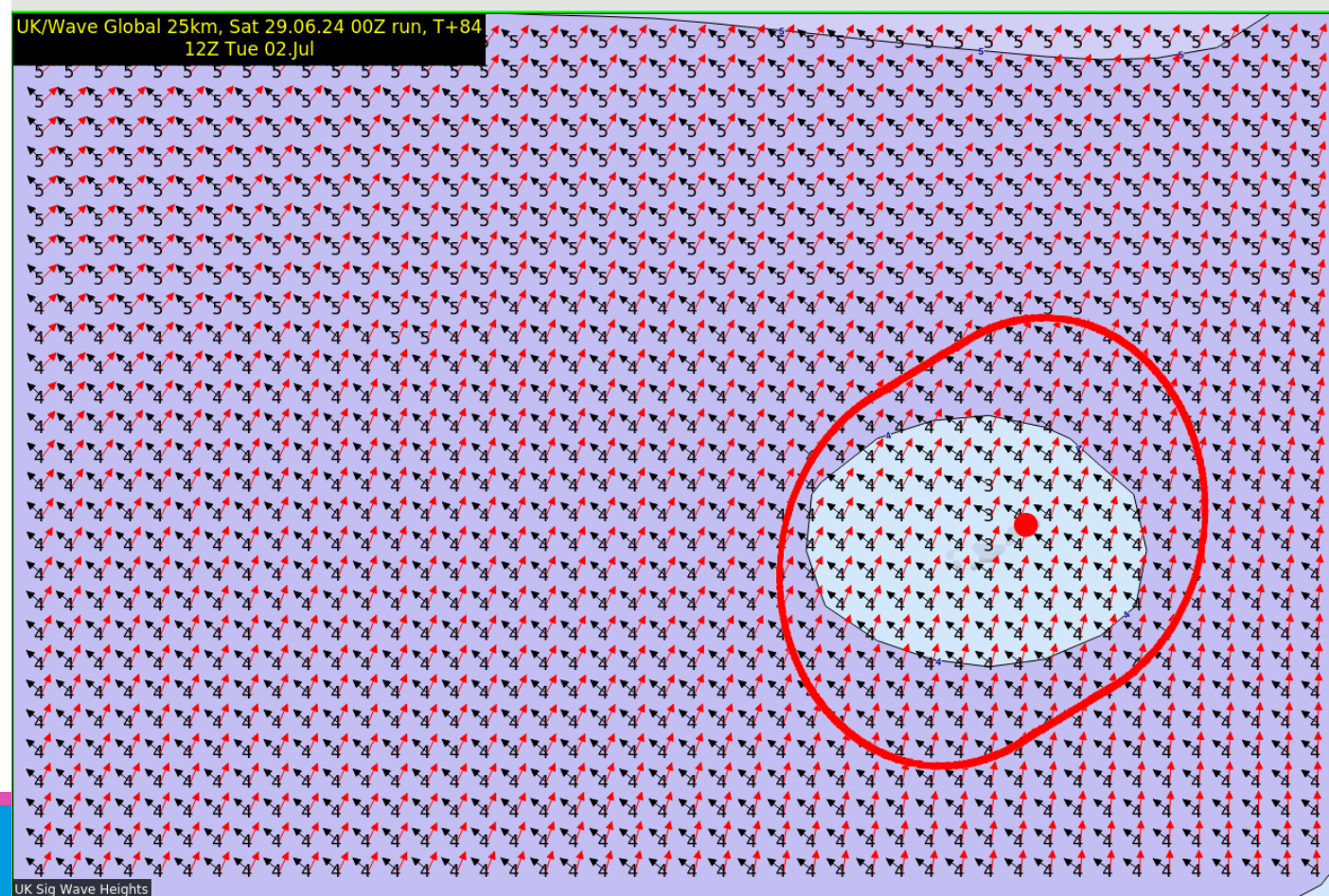
Red Line - 25nm Marine Area

Numbers - Significant Wave Heights

Red Arrows - Wave Direction

Black Arrows - Swell Direction

UK GLOBAL WAVE MODEL



Departure Conditions - Wednesday

MARINE FORECAST

Wednesday -

Winds south-southwesterly 10 to 15 knots, veering northwesterly 8 to 12 knots in the morning, further veering northerly 10 to 15 knots in the afternoon... Scattered showers with fair to poor visibility... Seas increasing, inside the reef 1 to 2 ft... Outside the reef 3 to 5 ft... Sunrise: 6:16 am; Sunset: 8:29 pm.

Key to Map:

Red Dot - Cooper's Island, Bermuda

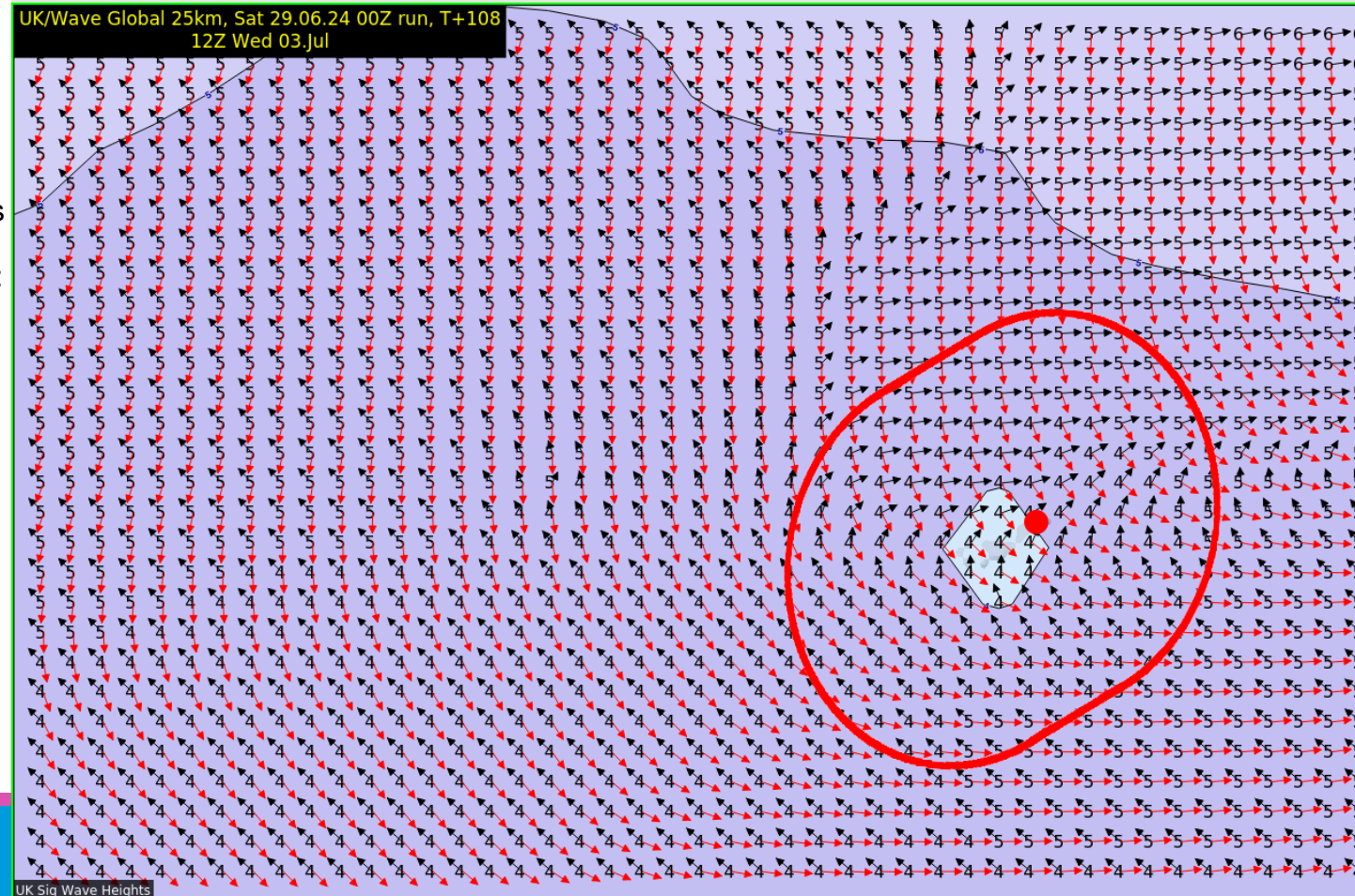
Red Line - 25nm Marine Area

Numbers - Significant Wave Heights

Red Arrows - Wave Direction

Black Arrows - Swell Direction

UK GLOBAL WAVE MODEL



Fair Winds and Following Seas

Questions

<https://weather.bm/>

<https://www.nhc.noaa.gov/index.shtml>

<https://ocean.weather.gov/>

